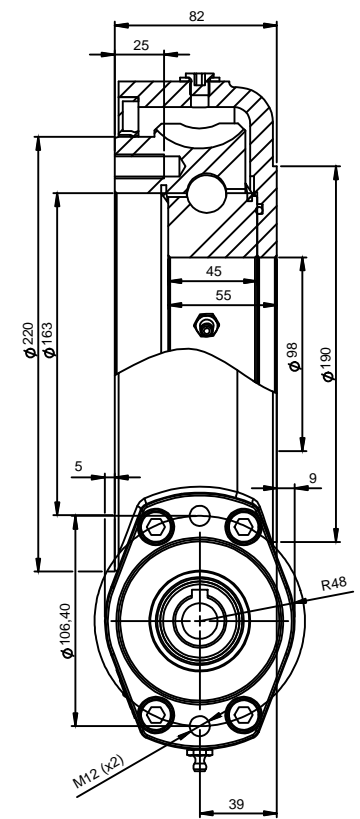
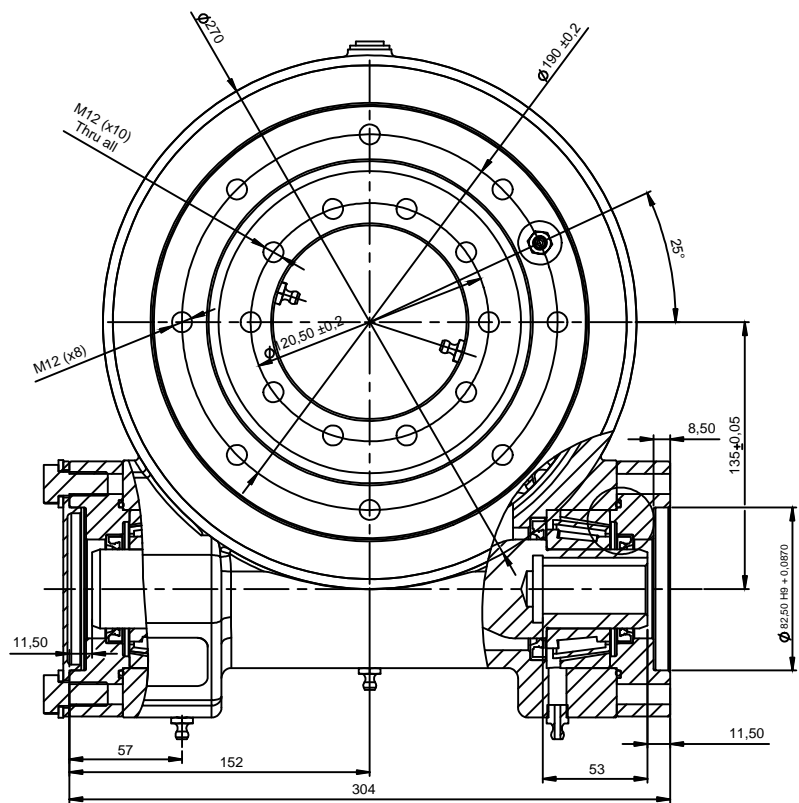
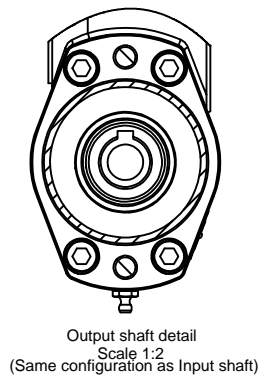
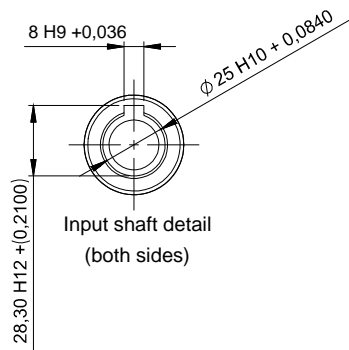


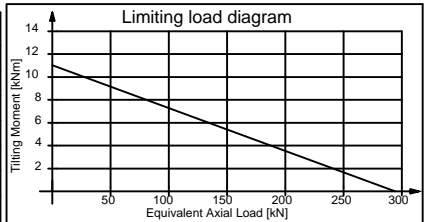
1 CH. 0.75x45° All over 2 All dimensions are in mm 3 If in doubt, please ask 4 Remove sharp corners 5 6 7 8



Note: Minimum input torque: 15Nm

Main performance parameters

Gear Ratio	44:1	Holding torque	25 kNm
Efficiency	40%	Tilting moment	11,2kNm
Self-locking gear	Yes	Radial static load	94kN
Backlash clearance	<0,15°	Axial static load	290kN
Maximum torque	6.500Nm	Radial dinamic load	83kN
Nominal torque	3.380Nm	Axial dinamic load	97kN



Notes: All slew drive are pre-lubricated. Maximum output speed 1rpm.

<p>KR KAVITSU GROUP OF INDUSTRIES</p>						Customer-Standard			Issued to -					
	Rev. no.		Revision note		Date	Signature	Checked	Limits	Designed by	Checked by	Approved by - date	Date	Material	Weight
	ARS		KVP		VGP			15.01.2022	C45	@36 Kgs.				
	<b>KAVITSU ROBOTRONIX Pvt.Ltd.Satara</b>							Model Description		Layout no.		Qty. - 01 nos.		
							SD-114-20-0163-FF		KRPL-SD-008		Edition 0 Sheet 1/1			