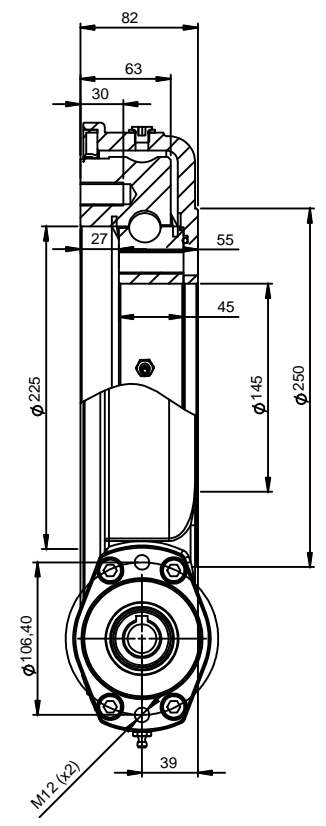
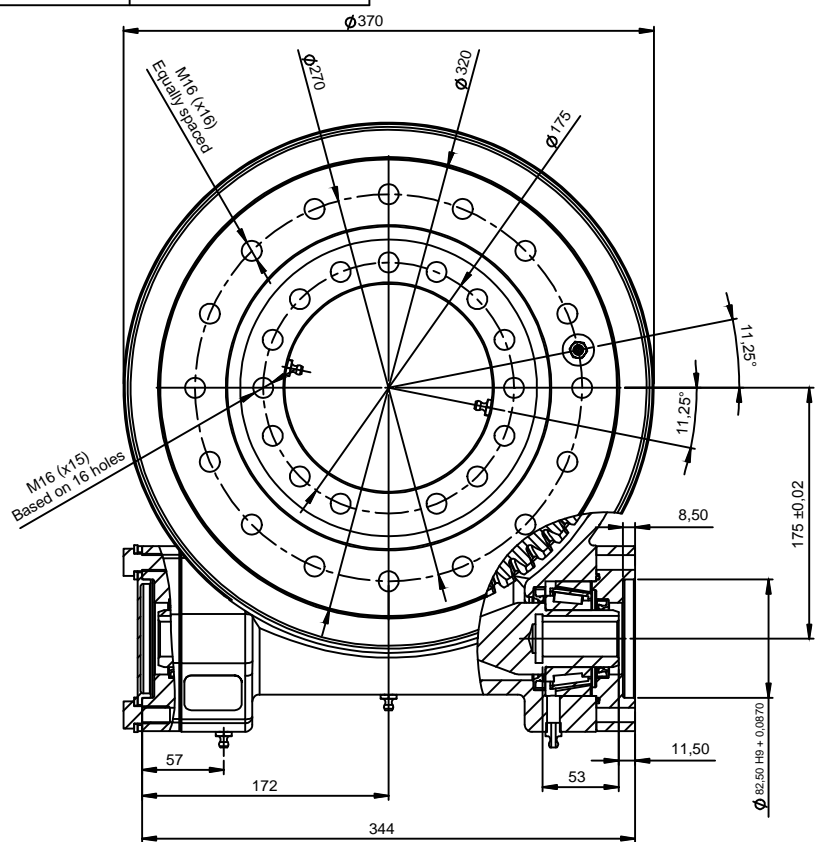
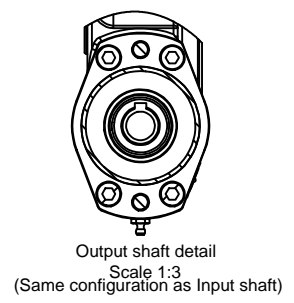
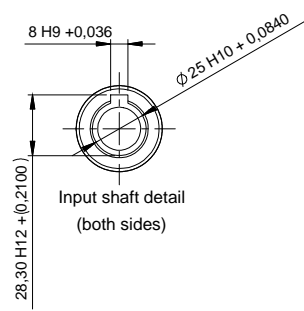


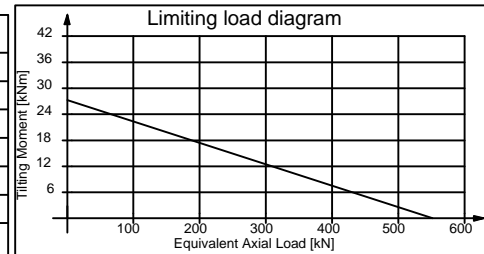
1 2 3 4 5 6 7 8
 CH. 0.75x45° All over All dimensions are in mm If in doubt, please ask Remove sharp corners



Note: Minimum input torque: 25Nm

Main performance parameters

| | | | |
|--------------------|---------|---------------------|---------|
| Gear Ratio | 61:1 | Holding torque | 34kNm |
| Efficiency | 40% | Tilting moment | 27,5kNm |
| Self-locking gear | Yes | Radial static load | 204kN |
| Backlash clearance | <0,10° | Axial static load | 547kN |
| Maximum torque | 9.100Nm | Radial dynamic load | 132kN |
| Nominal torque | 4.480Nm | Axial dynamic load | 154kN |



Notes: All slew drive are pre-lubricated. Maximum output speed 1rpm.

| | | | | | | | | | | | | | | |
|--|--|--|---------------|--|------|-------------------|---------|-------------------|-------------------|-------------|--------------------|------------|----------------|----------|
| Excellence in Gear Technology KAVITSU GROUP OF INDUSTRIES | | | | | | Customer-Standard | | | Issued to - | | | | | |
| | Rev. no. | | Revision note | | Date | Signature | Checked | Limits | Designed by | Checked by | Approved by - date | Date | Material | Weight |
| | | | | | | | | | ARS | KVP | VGP | 15.01.2022 | C45 | @45 Kgs. |
| | KAVITSU ROBOTRONIX Pvt.Ltd.Satara | | | | | | | | Model Description | | Layout no. | | Qty. - 01 nos. | |
| | | | | | | | | SD-114-20-0225-FF | | KRPL-SD-009 | | Edition | Sheet | |
| | | | | | | | | | | 0 | 1/1 | | | |