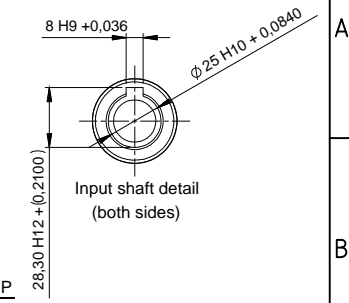
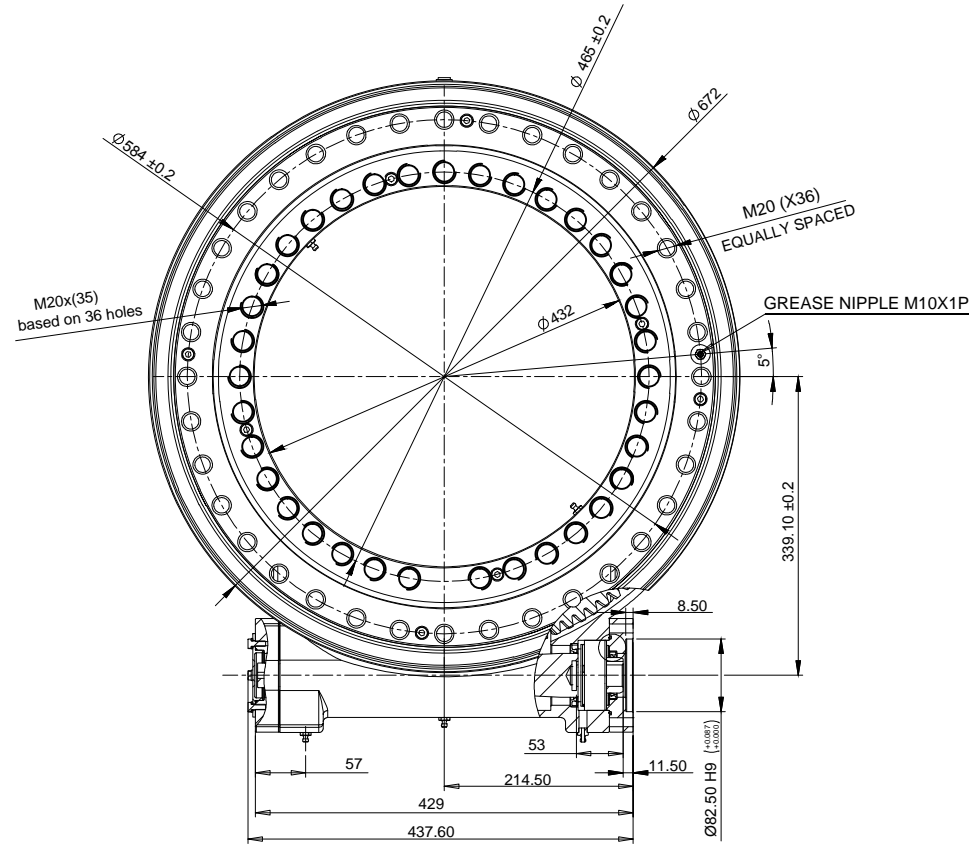
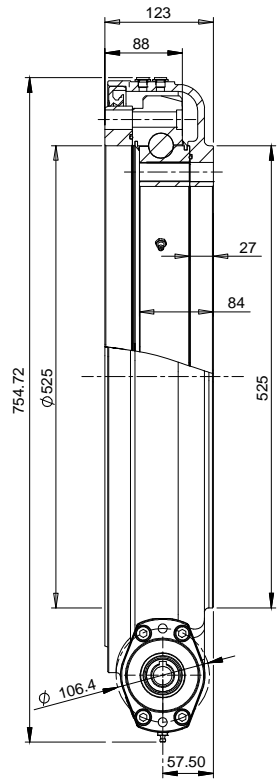


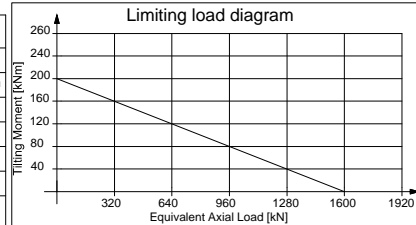
1 2 3 4 5 6 7 8
 CH. 0.75x45° All over All dimensions are in mm If in doubt, please ask Remove sharp corners



Note: Minimum input torque: 25Nm

Main performance parameters

Gear Ratio	125:1	Holding torque	95.2kNm
Efficiency	40%	Tilting moment	203.4kNm
Self-locking gear	Yes	Radial static load	640kN
Backlash clearance	<0.17°	Axial static load	1598kN
Maximum torque	30500Nm	Radial dynamic load	336kN
Nominal torque	23500Nm	Axial dynamic load	384kN



Notes: All slew drive are pre-lubricated. Maximum output speed 1rpm.

<p>KAVITSU GROUP OF INDUSTRIES</p>	Customer-Standard					Issued to -		
	Designed by	Checked by	Approved by - date	Date	Material	Weight		
	ARS	KVP	VGP	09.03.2024	C45	@120 Kgs.		
	Rev. no.	Revision note	Date	Signature	Checked	Limits	Model Description	Layout no.
KAVITSU ROBOTRONIX Pvt.Ltd.Satara						SD-114-25-0525-FF	KRPL-SD-012	Edition 0 Sheet 1/1